

*Proprietà*  
**Castello di Casole s.p.a.**

*Progettisti*  
**arch. Riccardo Bartoloni**  
**arch. Maria Dambrosio**  
**arch. Riccardo Bertini**

*Collaborazione*  
**arch. Tosca Bertini**  
**pian. Manuela Fontanive**  
**arch. Rudi Ulivi**

*Consulenza agronomica*  
**Agr. Giacomo Baffetti**  
**Agr. Francesco Baffetti**

*Consulenza geologica:*  
**Geol. Francesca Bianchi**

**C\_E2**

**Aggregato di Querceto**  
**Consistenza edilizia**  
**Stato attuato**



toponimi	Superficie edificata e/o edificabile aggregato di Querceto									
	interrato h>2,40	semi interrato	ecced. logge	piano terra	ecced. logge	piano primo	piano secondo	piano terzo	sottetto H>1,80	Totale
<b>Pdr – CONSISTENZE RECUPERATE ED AMPLIATE</b>										
QUERCETO VILLA	322,55			1.216,40	97,25	1.219,30	440,40	306,10	12,70	3.614,70
ANNESI PISCINA PEE				66,60						66,60
LIMONAIA				373,20		260,60				633,80
VILLA SCUOLA				434,40		98,05				532,45
CASA DEL PRETE				445,60		275,60				721,20
TINAIA						338,55				338,55
SPA	677,40			332,55						1.009,95
SERVIZI( H utile> 2,40)	392,20									392,20
MENDINI (realizzato)				341,10		341,10		287,40		969,60
S. ANTONIO A		111,60	19,00	120,70		80,85				332,15
S. ANTONIO B				405,20	26,30	288,90				720,40
S. ANTONIO C		105,40	29,70	103,30		67,05				305,45
<b>Totale SUL Pee mq.</b>										<b>9.637,05</b>

PdR – CONSISTENZE EDIFICI REALIZZATI NUOVA COSTRUZIONE										
ANNESI PISCINA (sanatoria)	44,60									44,60
S. ANTONIO D		10,90		350,75	24,30	246,55				632,50
<b>Totale SUL NC mq.</b>										<b>677,10</b>

ULTERIORI EDIFICAZIONI POSSIBILI DA PdR VIGENTE NON ANCORA ESEGUITE										
UMI 7 E UMI 10										3.207,00
<b>Totale SUL mq.</b>										<b>3.207,00</b>

#### RIEPILOGO SUPERFICI EDIFICATE ED EDIFICABILI

Consistenza interventi eseguiti da PdR vigente (pee e interrati)	mq.	9.637,05
Consistenza interventi di nuova costruzione eseguiti		677,10
<b>Totale Sup. Edificata</b>	<b>mq.</b>	<b>8.959,95</b>
Ulteriore edificazione possibile da PdR vigente	mq.	3.207,00
Diritti edificatori ceduti al sistema ricettivo diffuso UMI SD3C	mq.	500,00
<b>Sup edificabile disponibile nel PdR per ampliamento e nuove costruzioni</b>	<b>mq.</b>	<b>2.707,00</b>



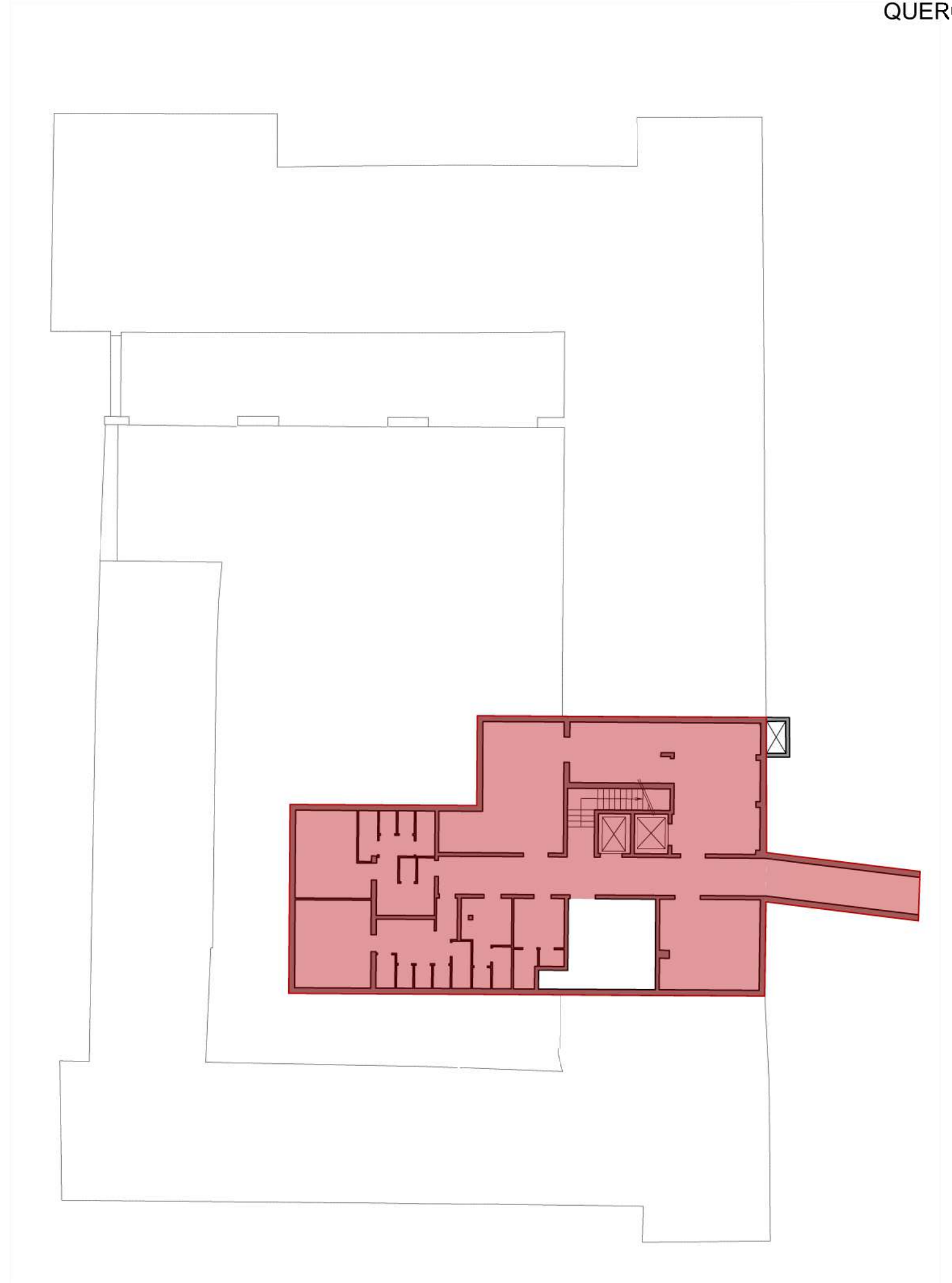


PLANIMETRIA DI RIFERIMENTO

RIEPILOGO SUPERFICIE UTILE LORDA

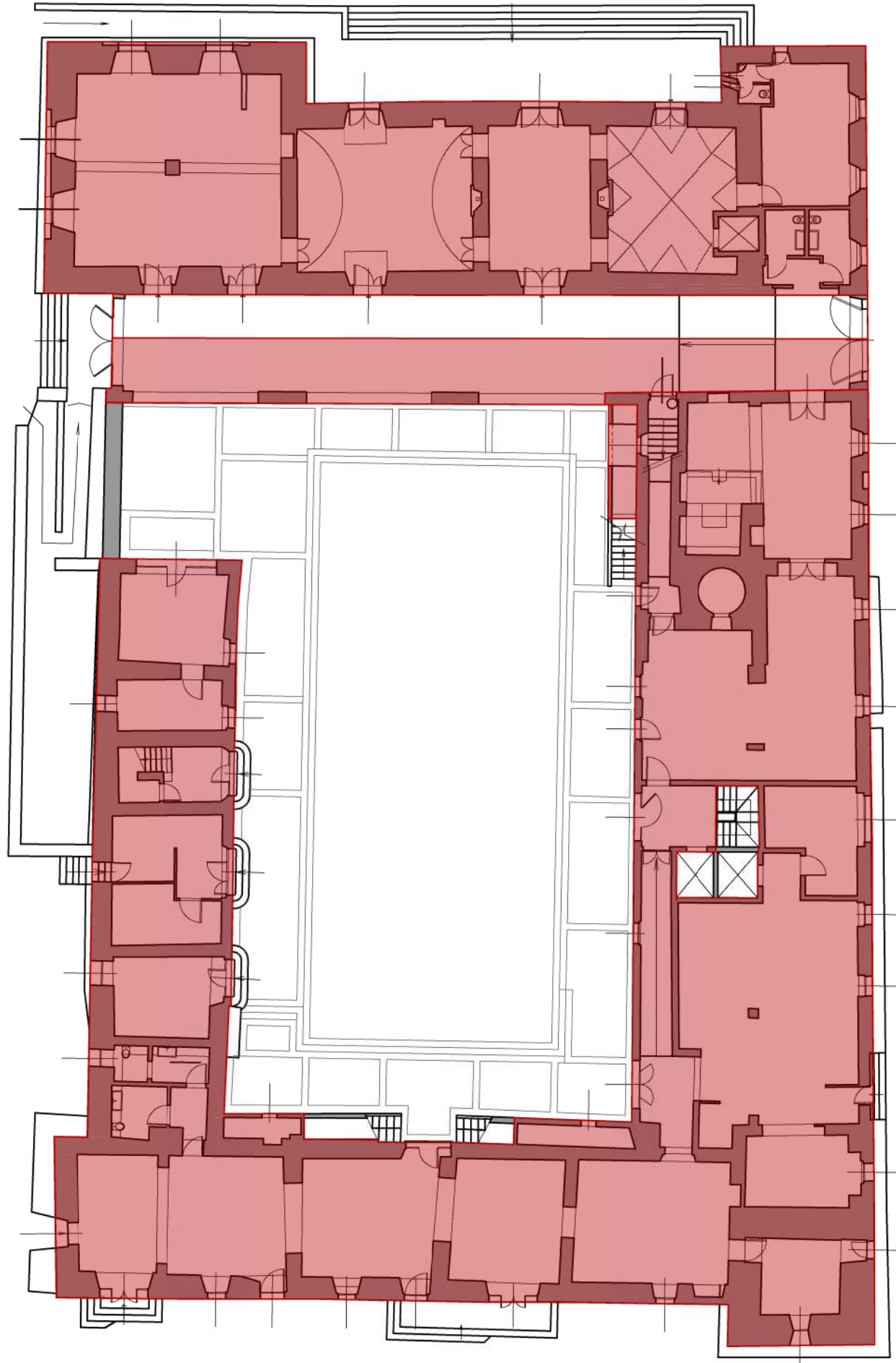
VILLA:

Piano seminterrato:	322,55 mq
Piano terra:	1313,65 mq
Piano primo:	1219,30 mq
Piano secondo:	440,40 mq
Piano terzo:	318,80 mq
<b>Tot.</b>	<b>3614,70 mq</b>

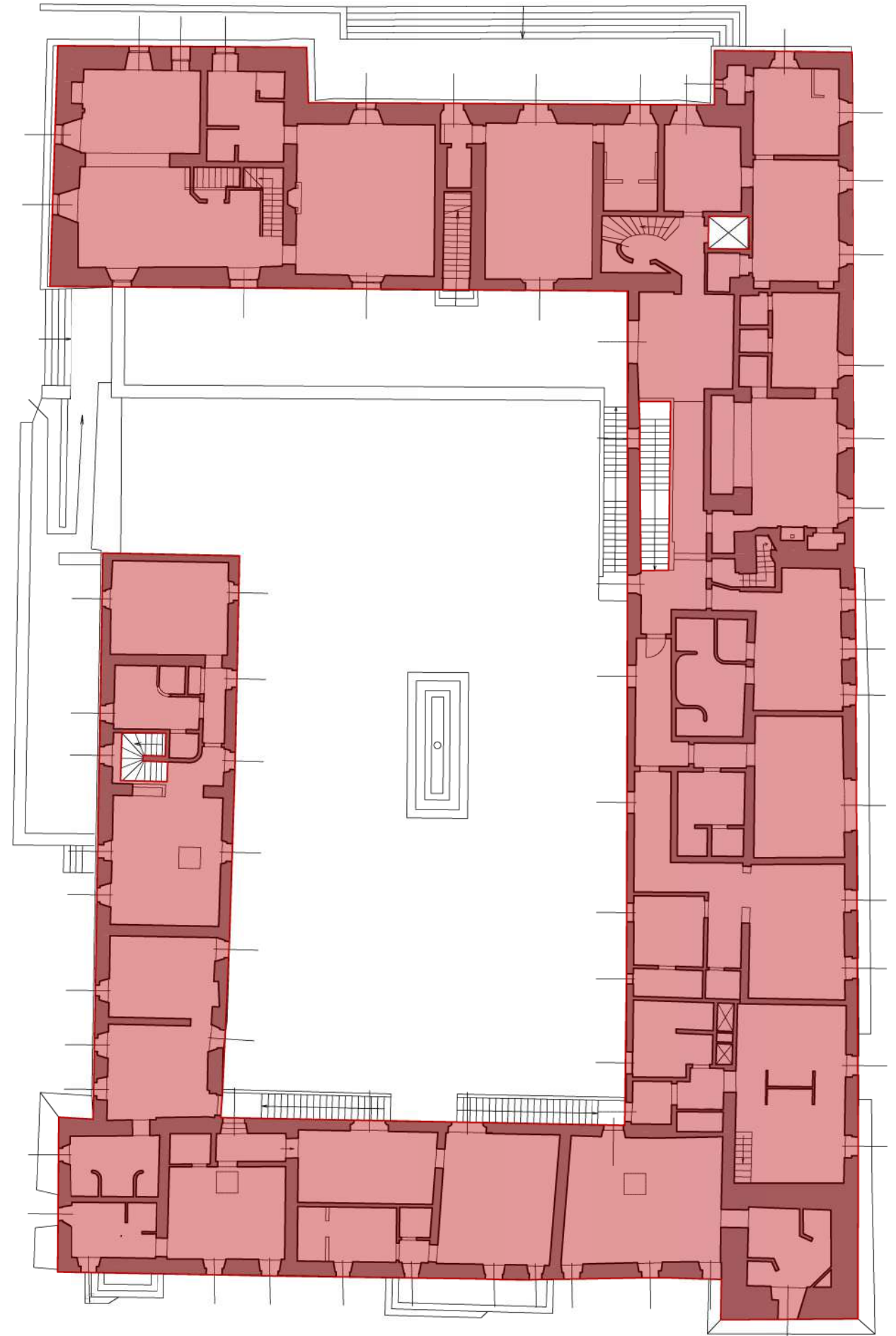


VILLA - PIANTA PIANO SEMINTERRATO\_ SUL 322,55 mq

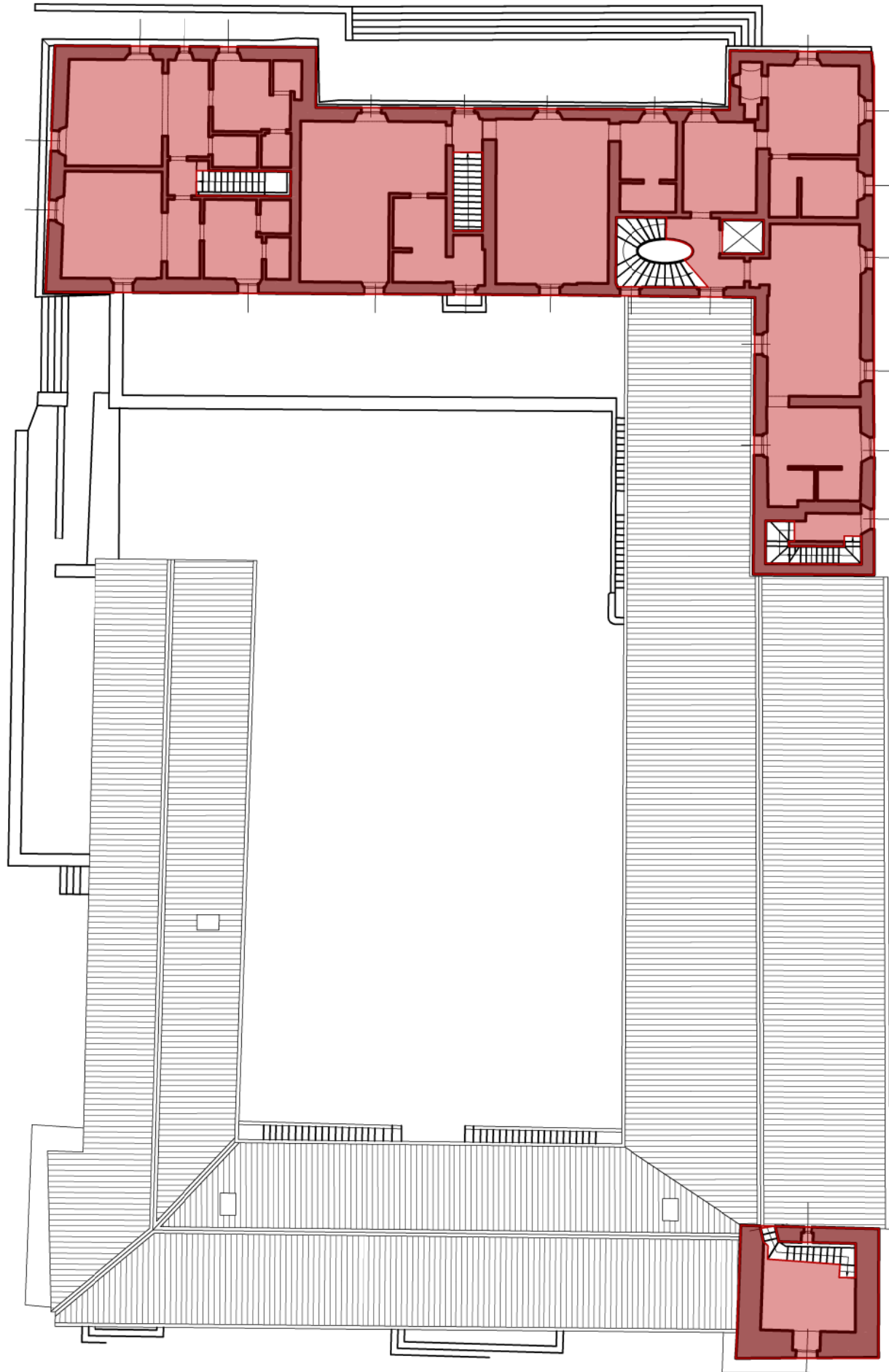




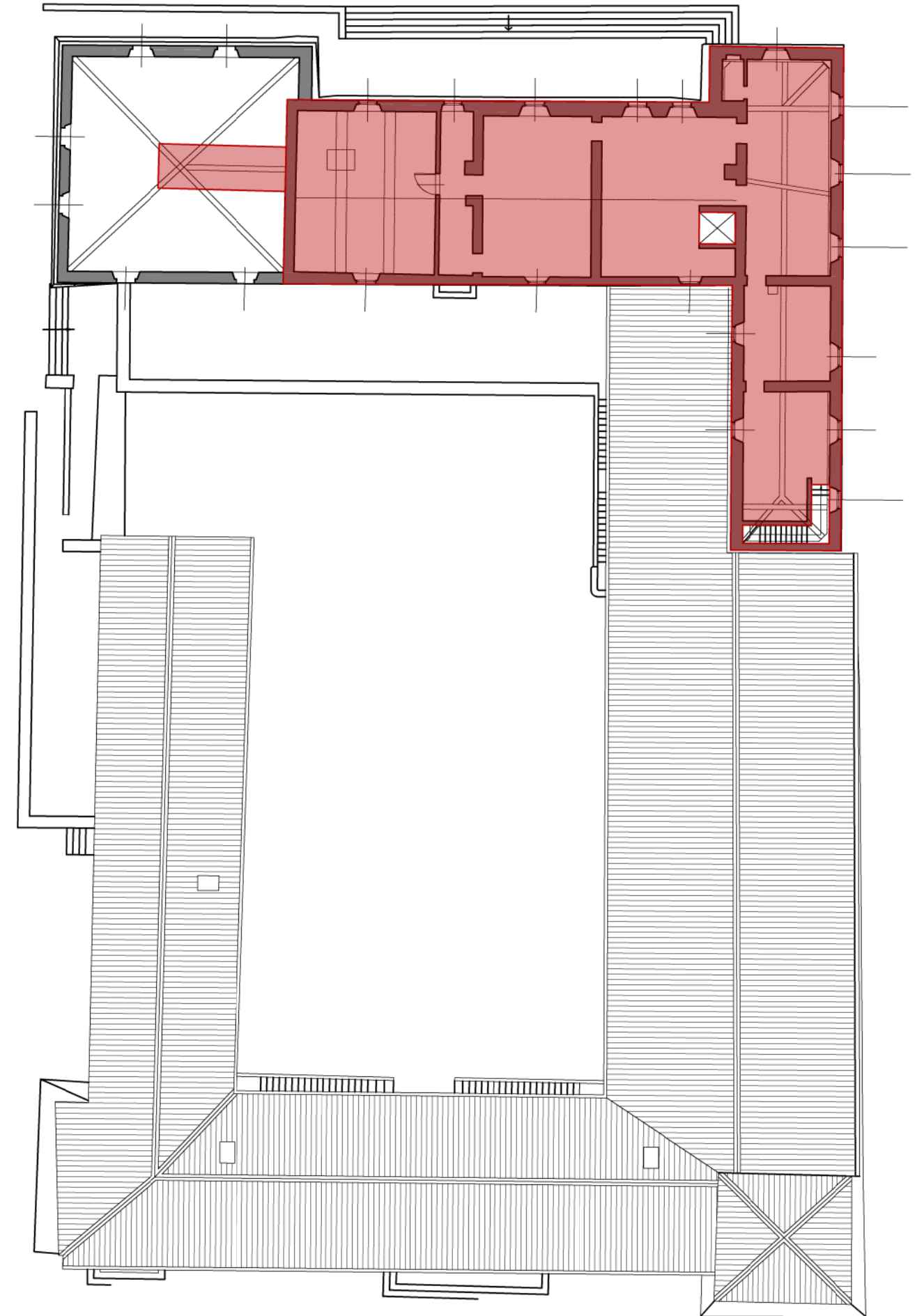
VILLA - PIANTA PIANO TERRA\_ SUL 1313,65 mq



VILLA - PIANTA PIANO PRIMO\_ SUL 1219,30 mq



VILLA - PIANTA PIANO SECONDO\_ SUL 440,40 mq



VILLA - PIANTA PIANO TERZO\_ SUL 318,80 mq





PLANIMETRIA DI RIFERIMENTO

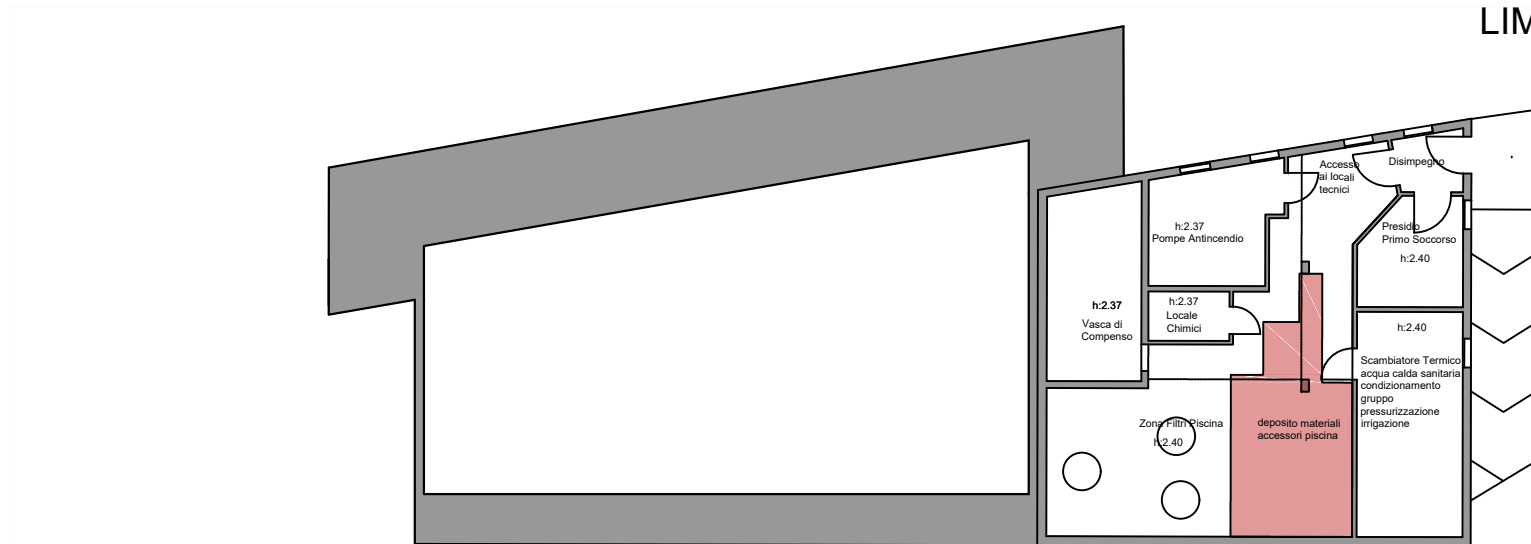
RIEPILOGO SUPERFICIE UTILE LORDA

LIMONAIA:

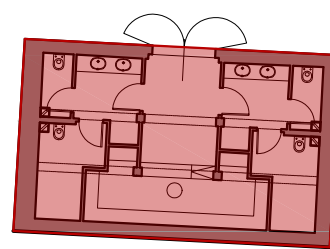
Piano terra:	373,19 mq
Piano primo:	260,60 mq
<b>Tot.</b>	<b>633,79 mq</b>

PISCINA:

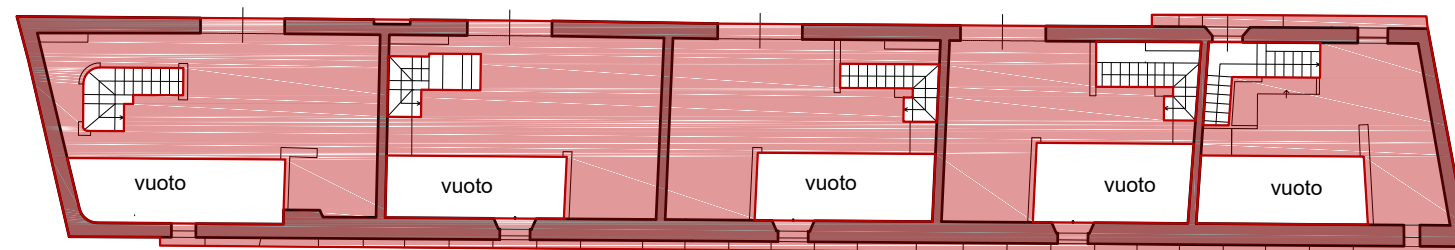
Piano terra:	66,60 mq
Piano interrato:	44,60 mq
<b>Tot.</b>	<b>111,20 mq</b>



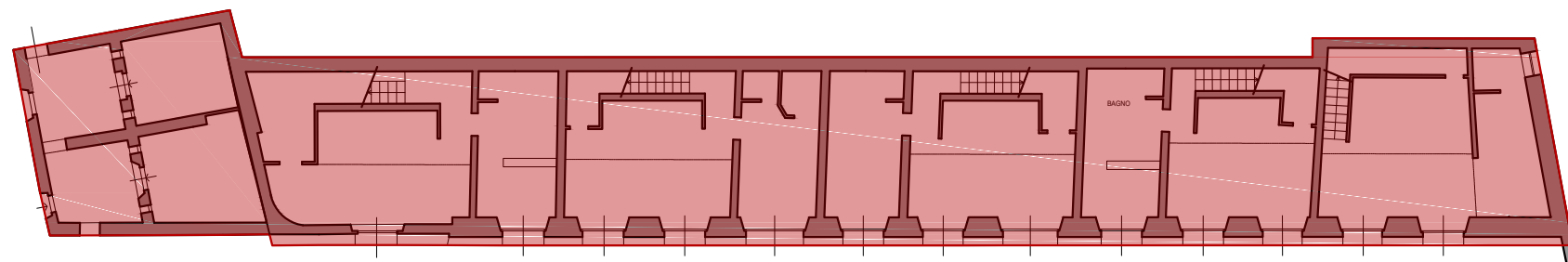
LOCALE DI SERVIZIO ALLA PISCINA -  
PIANTA PIANO INTERRATO SUL 44,60 MQ



ANNESNO PISCINA  
PIANTA PIANO TERRA  
\_ SUL 66,60 mq

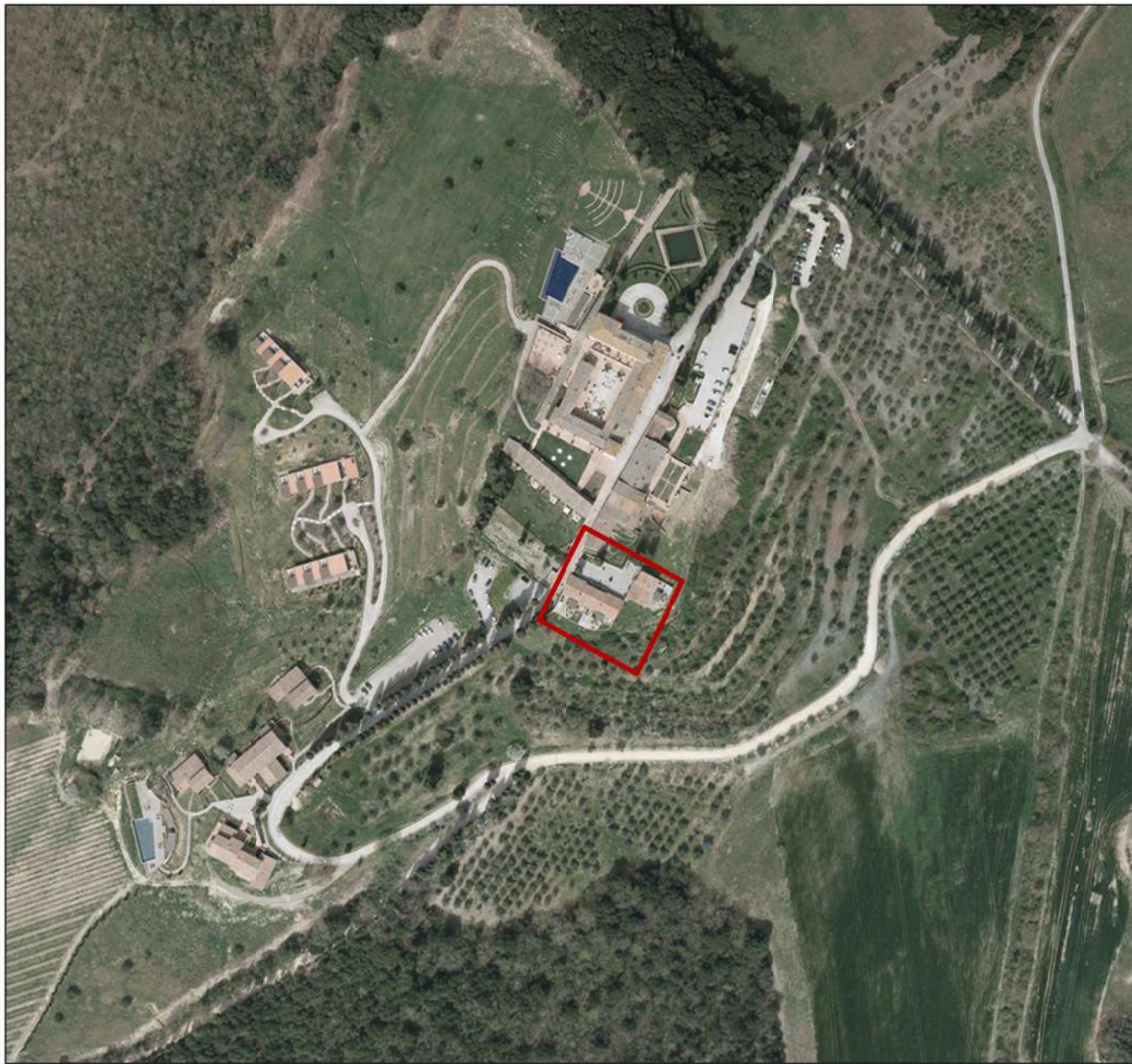


LIMONAIA PIANTA PIANO PRIMO\_ SUL 260,60 mq



LIMONAIA PIANTA PIANO TERRA\_ SUL 373,19 mq



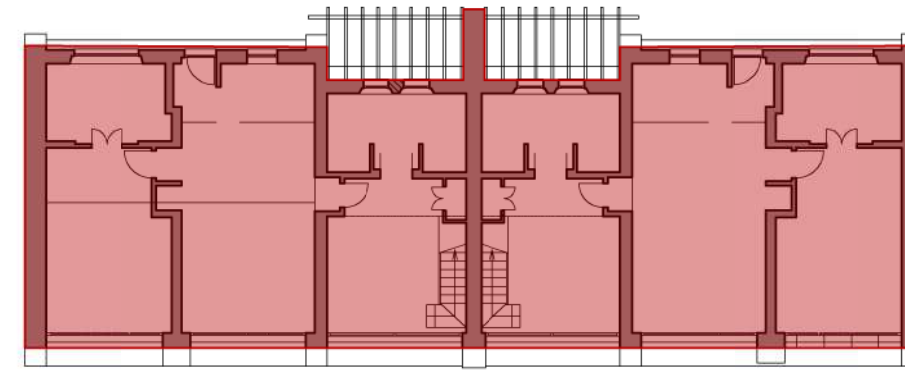
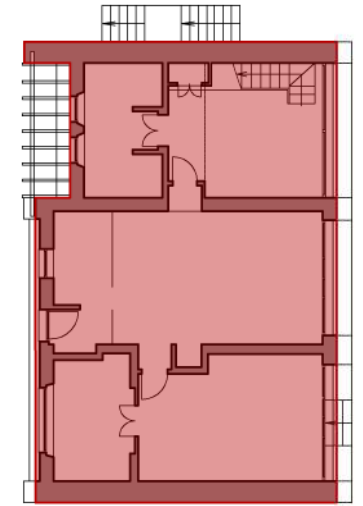


PLANIMETRIA DI RIFERIMENTO

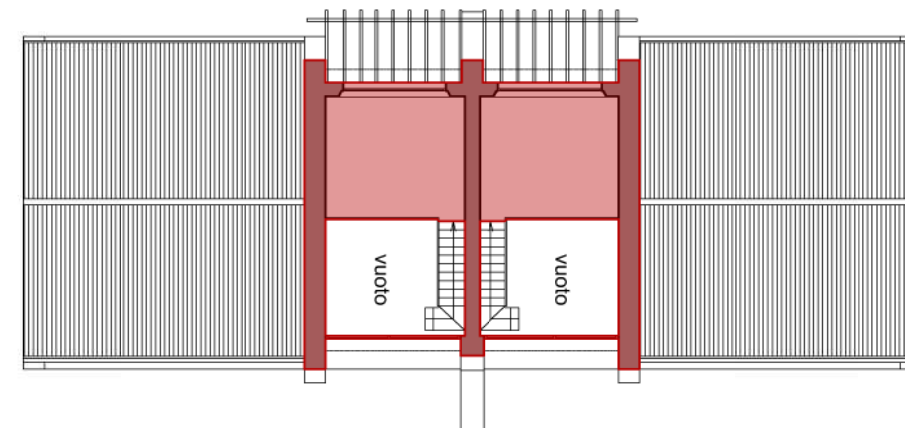
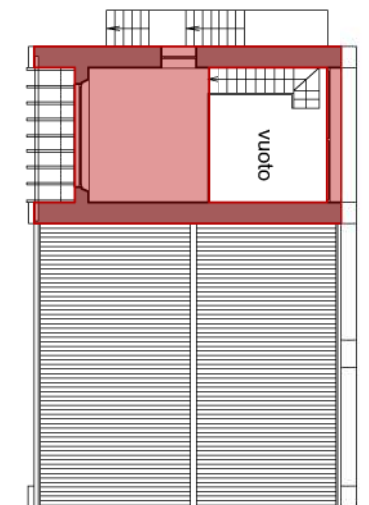
## RIEPILOGO SUPERFICIE UTILE LORDA

## VILLA SCUOLA

Piano terra:	434,40 mq
Piano primo:	98,05 mq
<b>Tot.</b>	<b>532,45 mq</b>



VILLA SCUOLA - PIANTA PIANO TERRA\_SUL 434,40 mq



VILLA SCUOLA - PIANTA PIANO PRIMO\_SUL 98,05 mq





PLANIMETRIA DI RIFERIMENTO

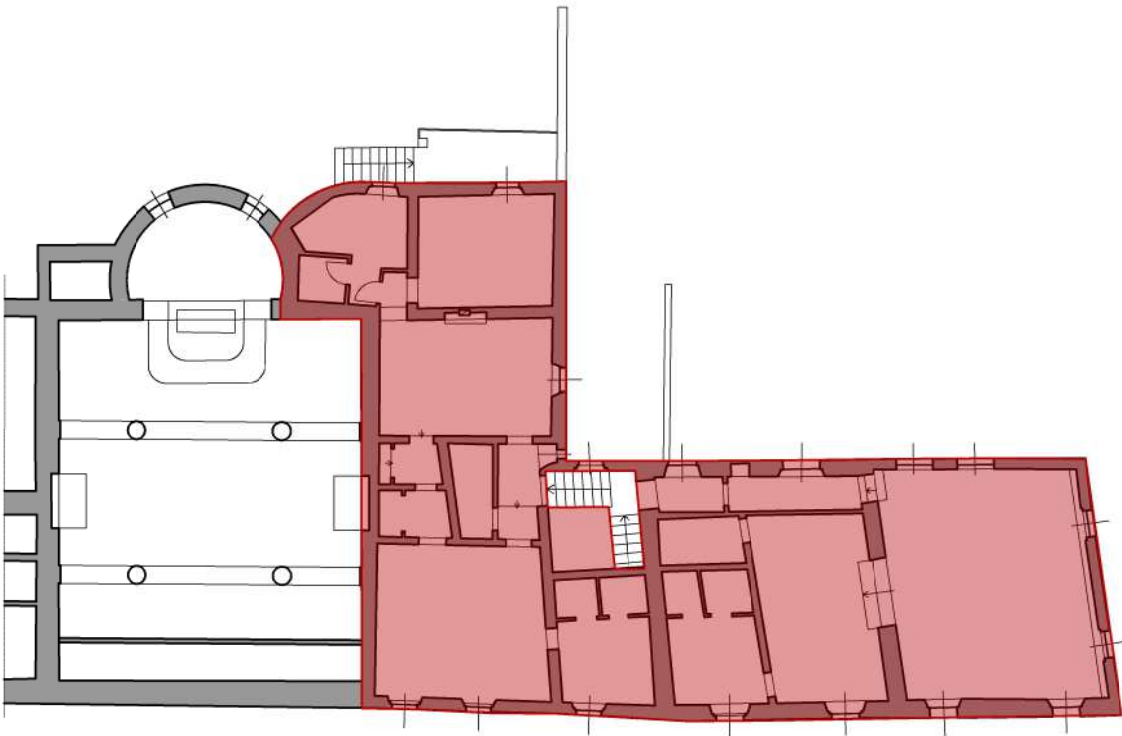
RIEPILOGO SUPERFICIE UTILE LORDA

CASA DEL PRETE:

Piano terra:	445,60 mq
Piano primo:	275,60 mq
<b>Tot.</b>	<b>721,20 mq</b>



CASA DEL PRETE - PIANTA PIANO TERRA\_ SUL 445,60 mq



CASA DEL PRETE - PIANTA PIANO PRIMO\_ SUL 275,60 mq





PLANIMETRIA DI RIFERIMENTO

RIEPILOGO SUPERFICIE UTILE LORDA

SPA:

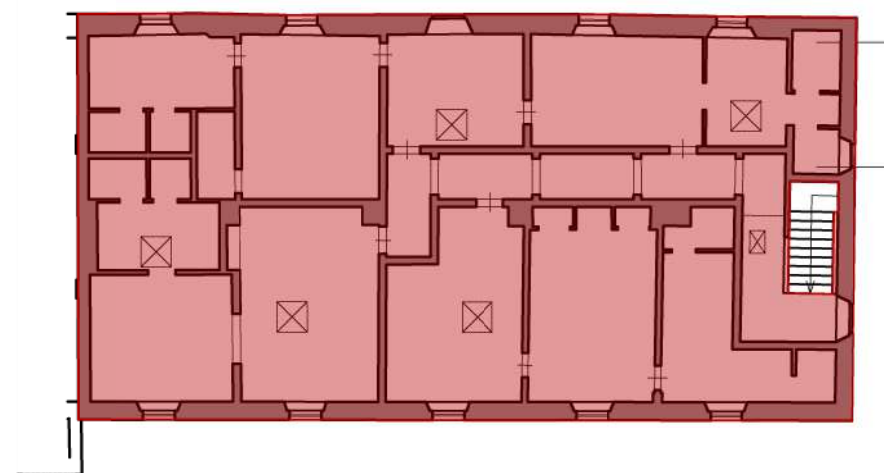
Piano terra	332,55 mq
Piano interrato	677,40 mq

<b>Tot.</b>	<b>1009,95 mq</b>
-------------	-------------------

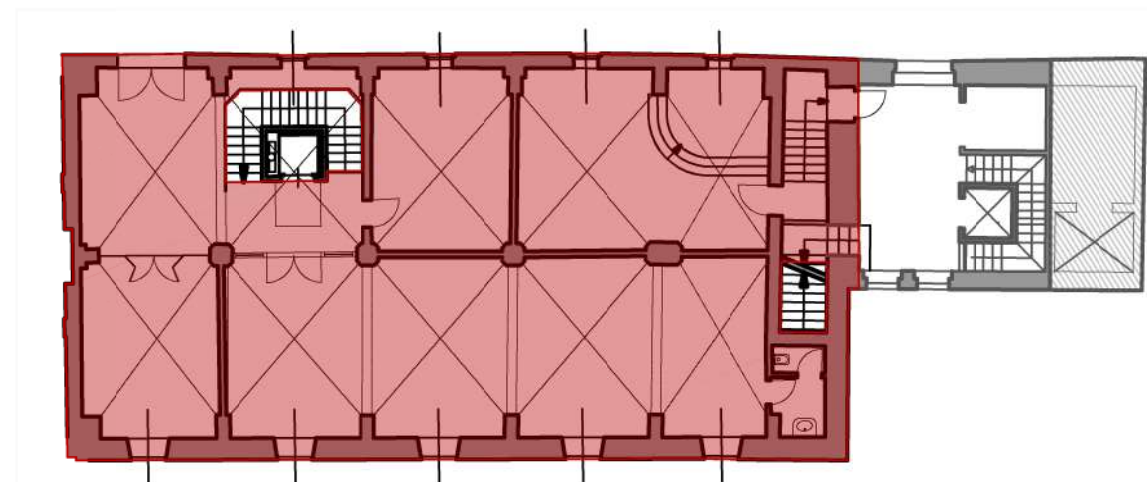
TINAIA

Piano primo	338,55 mq
-------------	-----------

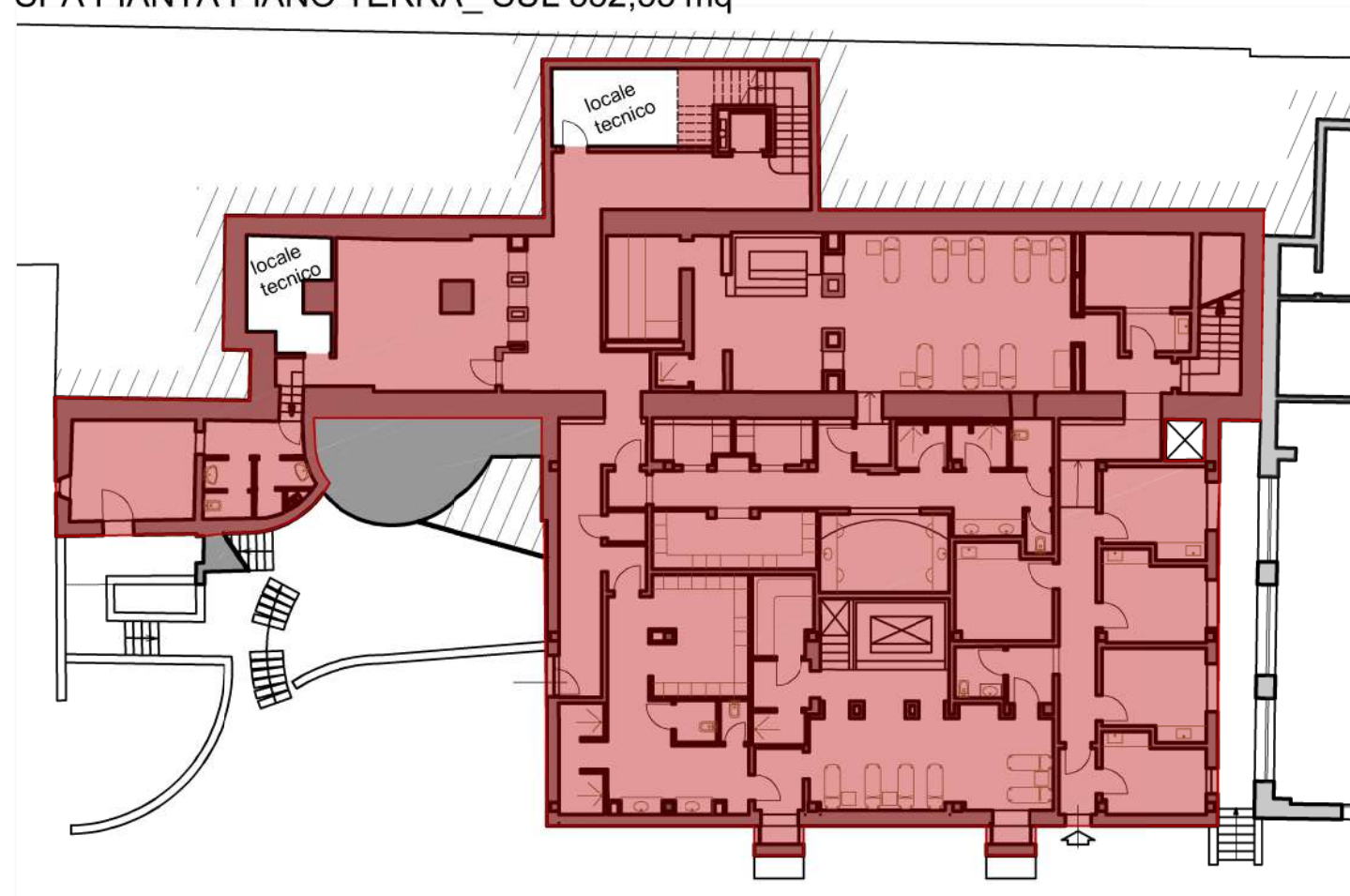
<b>Tot.</b>	<b>338,55 mq</b>
-------------	------------------



TINAIA -  
PIANTA PIANO  
PRIMO  
SUL\_338,55 mq



SPA PIANTA PIANO TERRA\_ SUL 332,55 mq



SPA PIANTA PIANO SEMINTERRATO\_ SUL 677,40 mq





PLANIMETRIA DI RIFERIMENTO

RIEPILOGO SUPERFICIE UTILE LORDA

SERVIZI:

Piano interrato:	393,20 mq
<b>Tot.</b>	<b>393,20 mq</b>



SERVIZI PIANTA PIANO INTERRATO\_SUL 392,20 mq





PLANIMETRIA DI RIFERIMENTO

RIEPILOGO SUPERFICIE UTILE LORDA

CASE MENDINI:

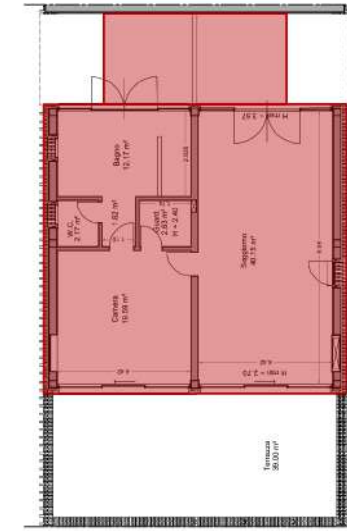
Edificio A:	323,20 mq
Edificio B:	323,20 mq
Edificio C:	323,20 mq
<b>Tot.</b>	<b>969,60 mq</b>

EDIFICIO A



P. TERRA SUL 113,70 mq

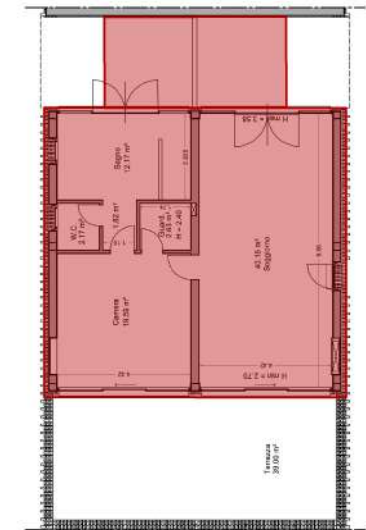
EDIFICIO B



P. TERRA SUL 113,70 mq

CASE MENDINI

EDIFICIO C



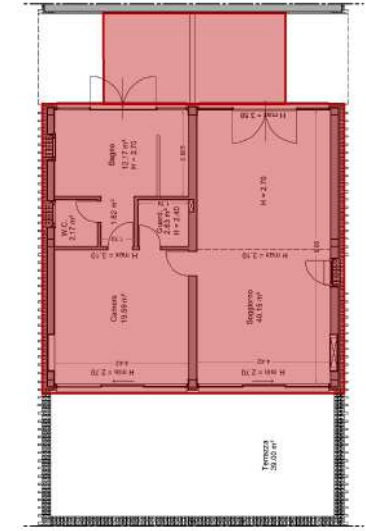
P. TERRA SUL 113,70 mq



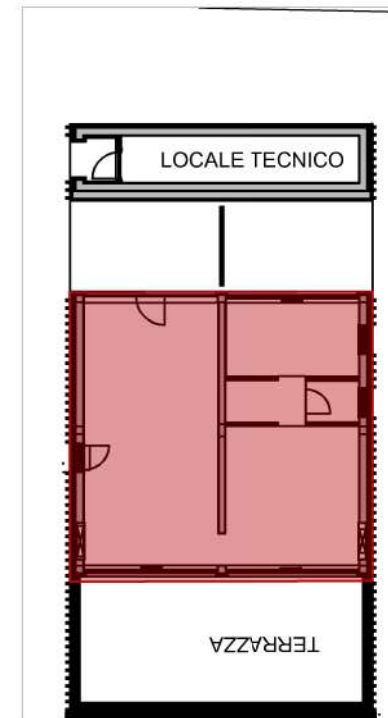
P. PRIMO SUL 113,70 mq



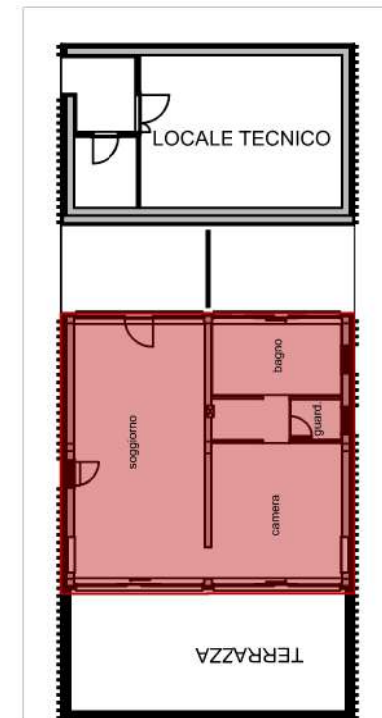
P. PRIMO SUL 113,70 mq



P. PRIMO SUL 113,70 mq



P. SECONDO SUL 95,80 mq



P. SECONDO SUL 95,80 mq



P. SECONDO SUL 95,80 mq

PIANTE CASE MENDINI\_ SUL TOTALE 969,60 mq





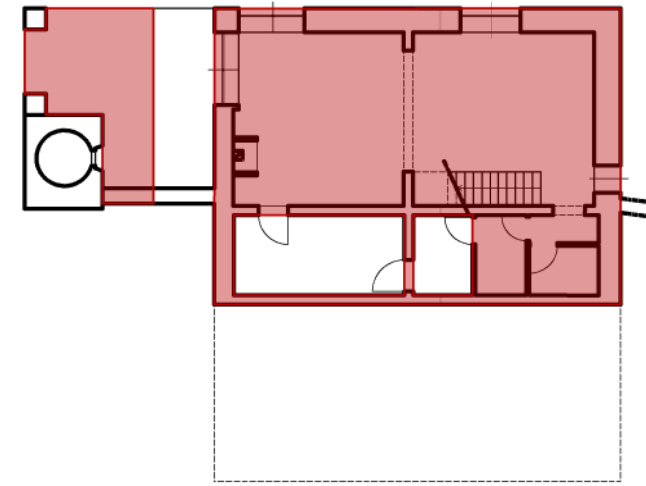
PLANIMETRIA DI RIFERIMENTO

RIEPILOGO SUPERFICIE UTILE LORDA

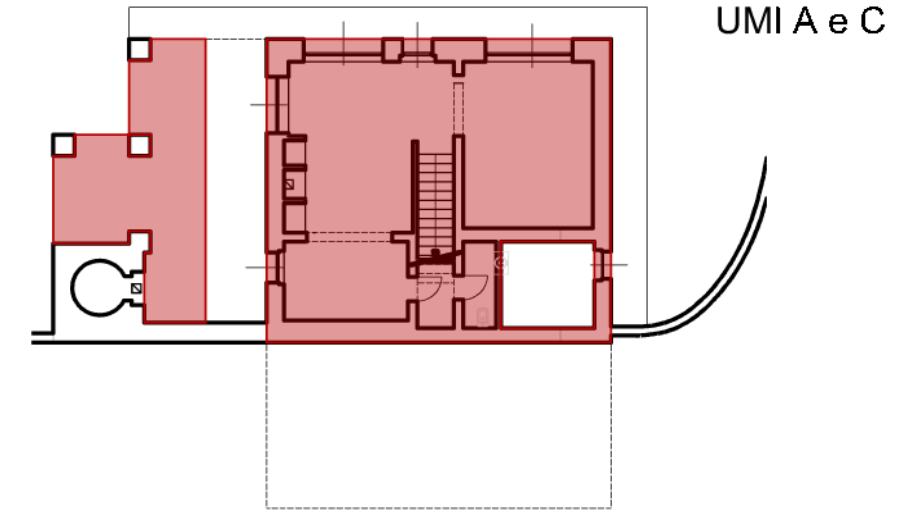
SANT'ANTONIO:

Edificio A:	332,15 mq
Edificio B:	720,40 mq
Edificio C:	305,45 mq
Edificio D:	632,50 mq

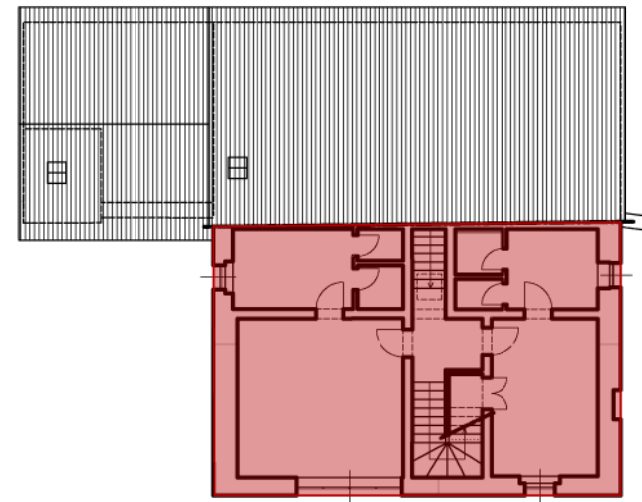
Tot. 1989,84 mq



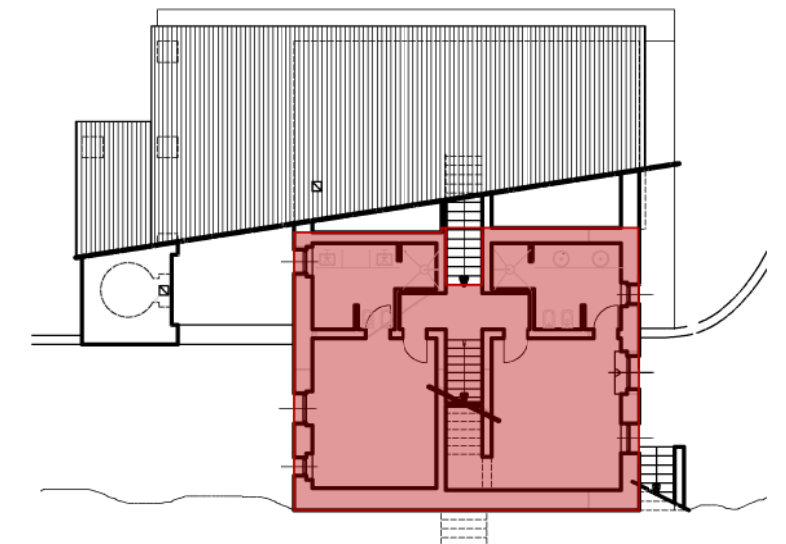
S.ANTONIO ED. A - PIANTA PIANO SEMINTERRATO \_SUL 130,60 mq



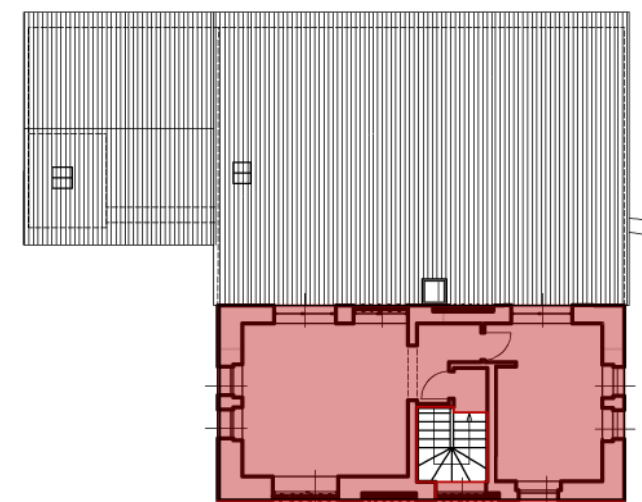
S.ANTONIO ED. C - PIANTA PIANO SEMINTERRATO \_SUL 135,10 mq



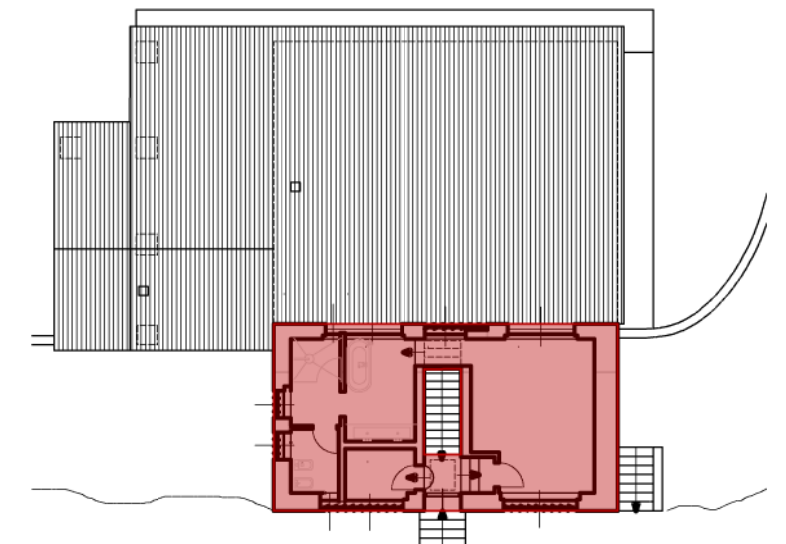
S.ANTONIO ED. A - PIANTA PIANO TERRA \_SUL 120,70 mq



S.ANTONIO ED. C - PIANTA PIANO TERRA \_SUL 103,30 mq

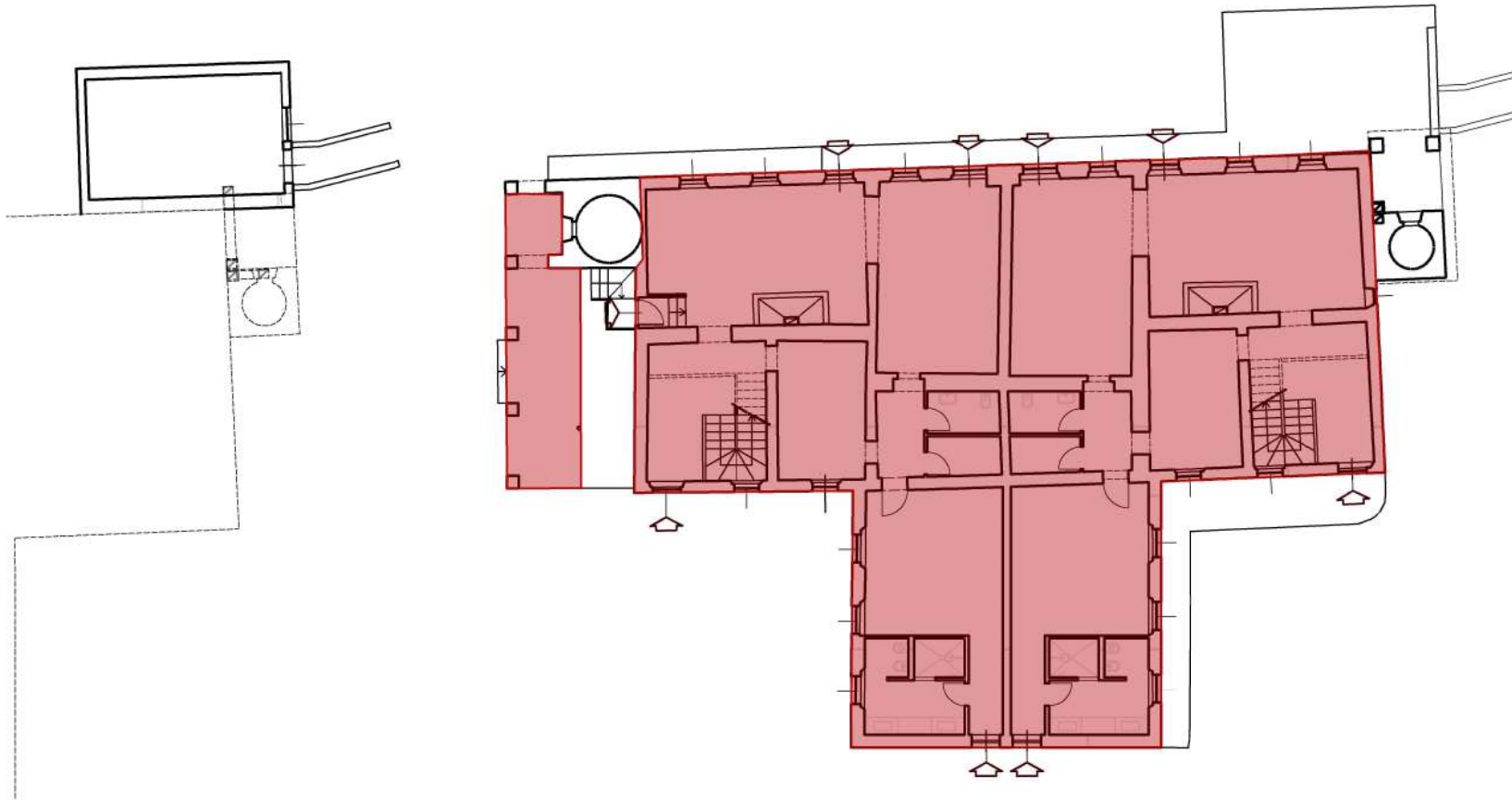


S.ANTONIO ED. A - PIANTA PIANO PRIMO \_SUL 80,85 mq



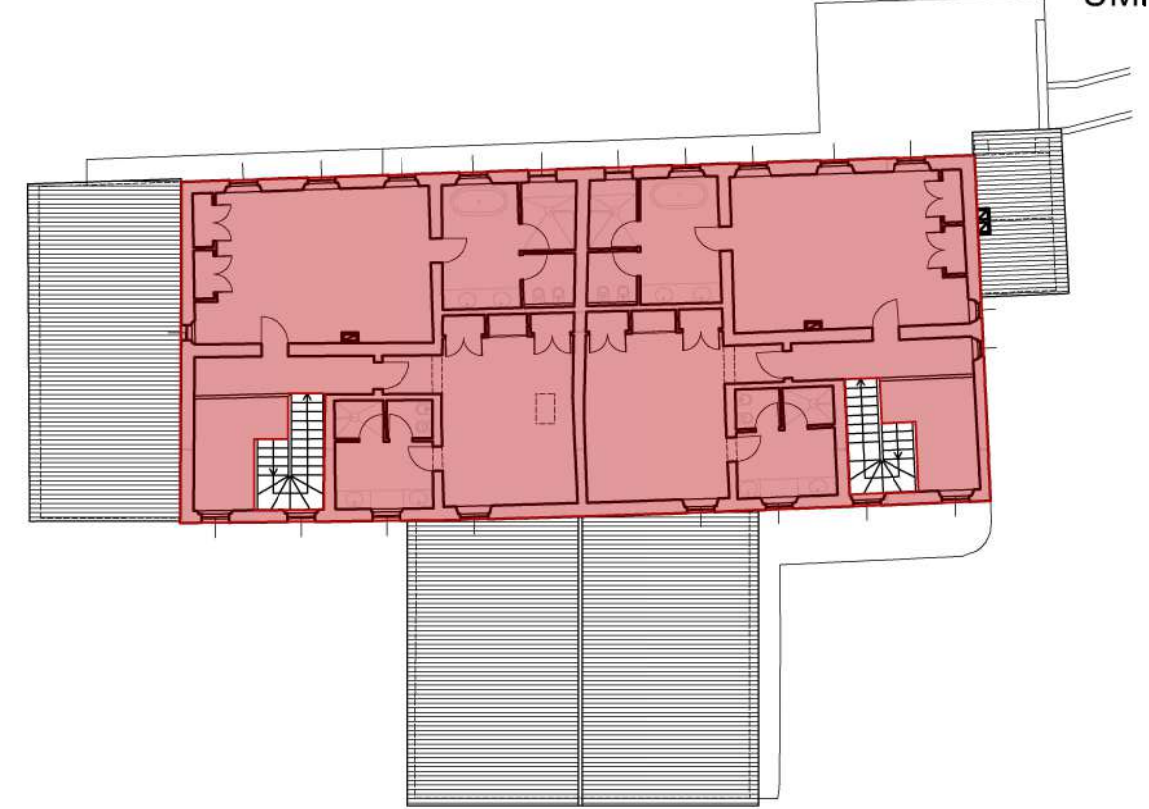
S.ANTONIO ED. C - PIANTA PIANO PRIMO \_SUL 67,05 mq



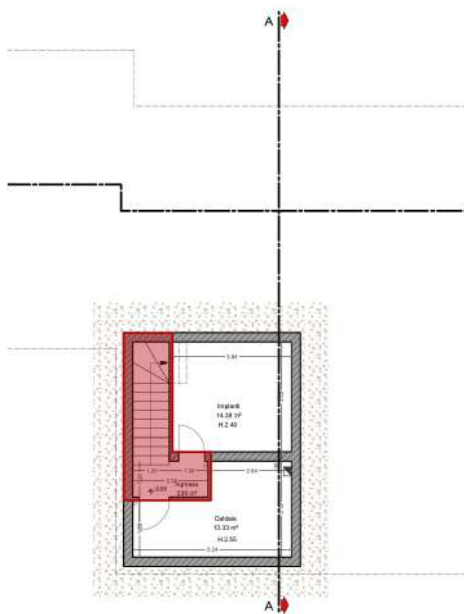


ED. B PIANTA PIANO  
INTERRATO\_ SUL 0 mq

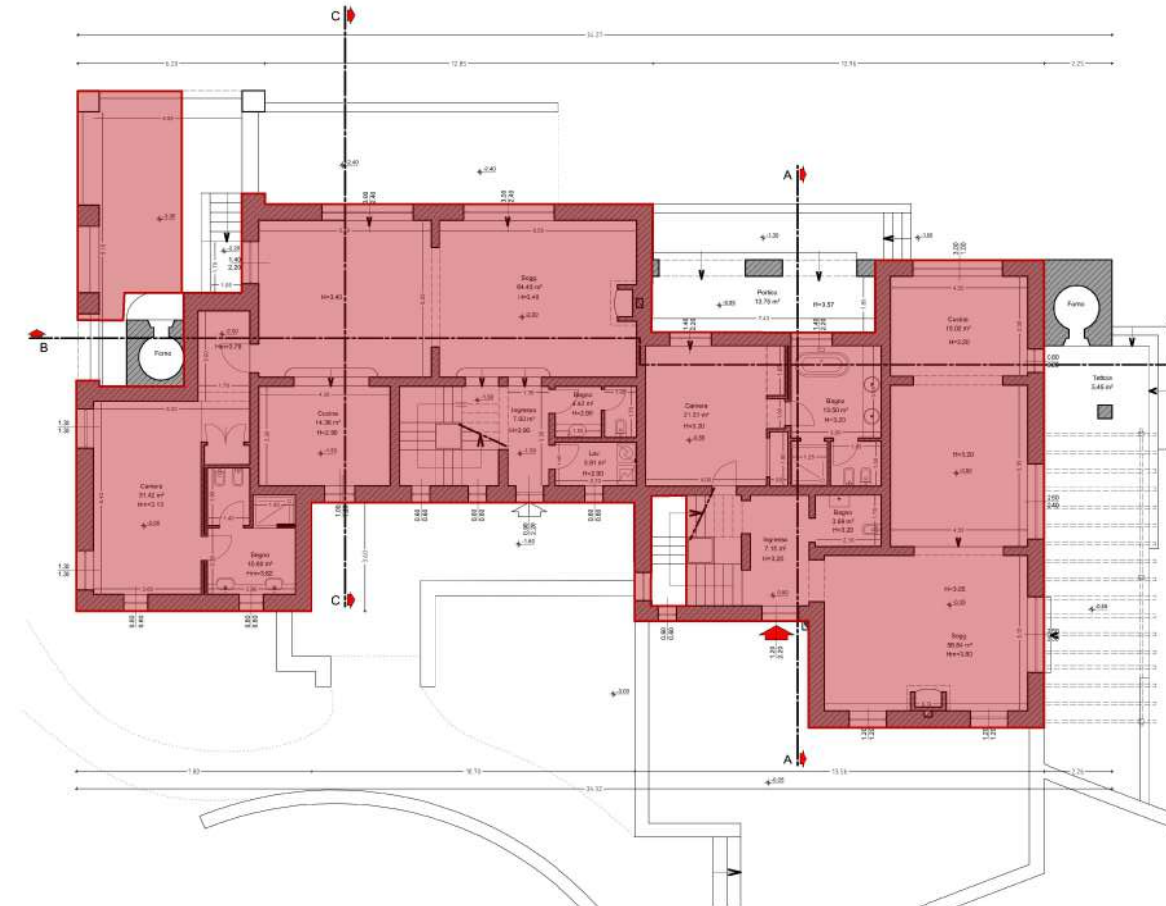
S.ANTONIO ED. B  
PIANTA PIANO TERRA\_ SUL 431,50 mq



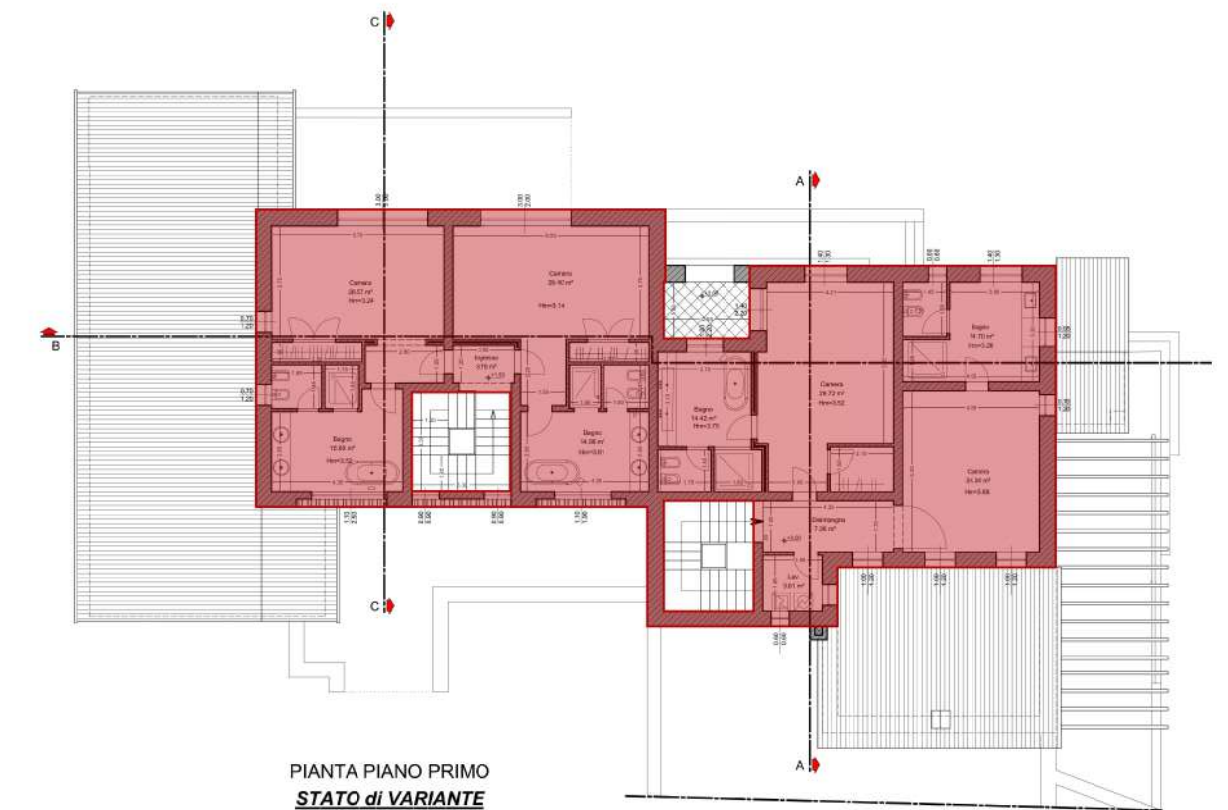
S.ANTONIO ED. B  
PIANTA PIANO PRIMO\_ SUL 288,90 mq



ED. D PIANTA PIANO  
INTERRATO\_ SUL 10,90 mq



S.ANTONIO ED. D  
PIANTA PIANO TERRA\_ SUL 375,05



S.ANTONIO ED. D  
PIANTA PIANO PRIMO\_ SUL 246,55 mq

PIANTA PIANO PRIMO  
**STATO di VARIANTE**